

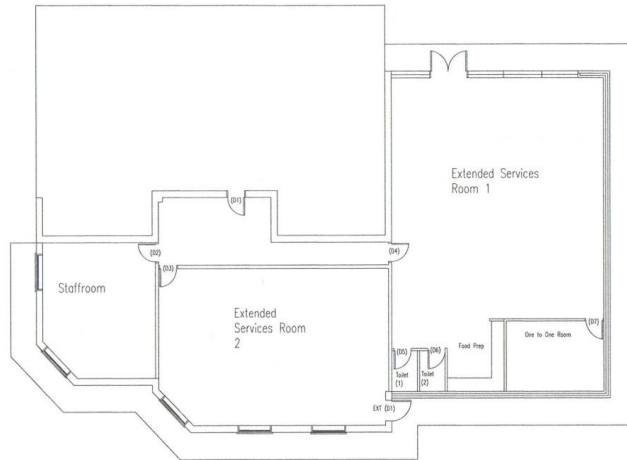
BURTON JOYCE PRIMARY SCHOOL - NOTTINGHAM



3000 SQ FT EXTENSION 2 CLASSROOMS, STAFF ROOM & KITCHEN



- 3000 sq ft Extension
- 2 Classrooms
- Staff Room
- Kitchen
- Suspended Ceiling throughout
- Carpet Tiles & Safety Flooring
- Plumbing & Electrics
- Supply & Fit Kitchenette
- Supply & Fit Classroom W.C's
- Installation of Air Conditioning System



BURTON JOYCE PRIMARY SCHOOL
Proposed Layout
DATE:- 13.09.10
Drawn By:- PML
D.L. Rhodes & Son Ltd Building Contractors & Developers Unit 9b Catton Road Arnold Nottingham NG5 7JD Tel: 0115 871 8714 Fax: 0115 920 006 Web: www.rhodesbuilders.co.uk
dlr DL Rhodes & Son Civil Engineering Building Contractors Developers

"DL Rhodes builders took over the completion of our extension and have done a magnificent job for us! We now have a wonderful extended services room, classroom and staffroom. We found Nigel and Paul very easy to work with from beginning to end and the quality of their workmanship has been superb! The timeline presented to us at the start of the project was kept to and any issues along the way have been sorted quickly and efficiently. All the health and safety requirements were spot on and DL Rhodes' workforce were professional and courteous at all times. I would absolutely recommend DL Rhodes to any school considering building works!

M.L. Gretton (Head Teacher at Burton Joyce Primary) head@burtonjoyce.notts.sch.uk

Unit 9b Catton Road, Arnold, Nottingham NG5 7JD

Tel: 0115 871 8714 Fax: 0115 920 0006 Web: www.rhodesbuilders.co.uk